

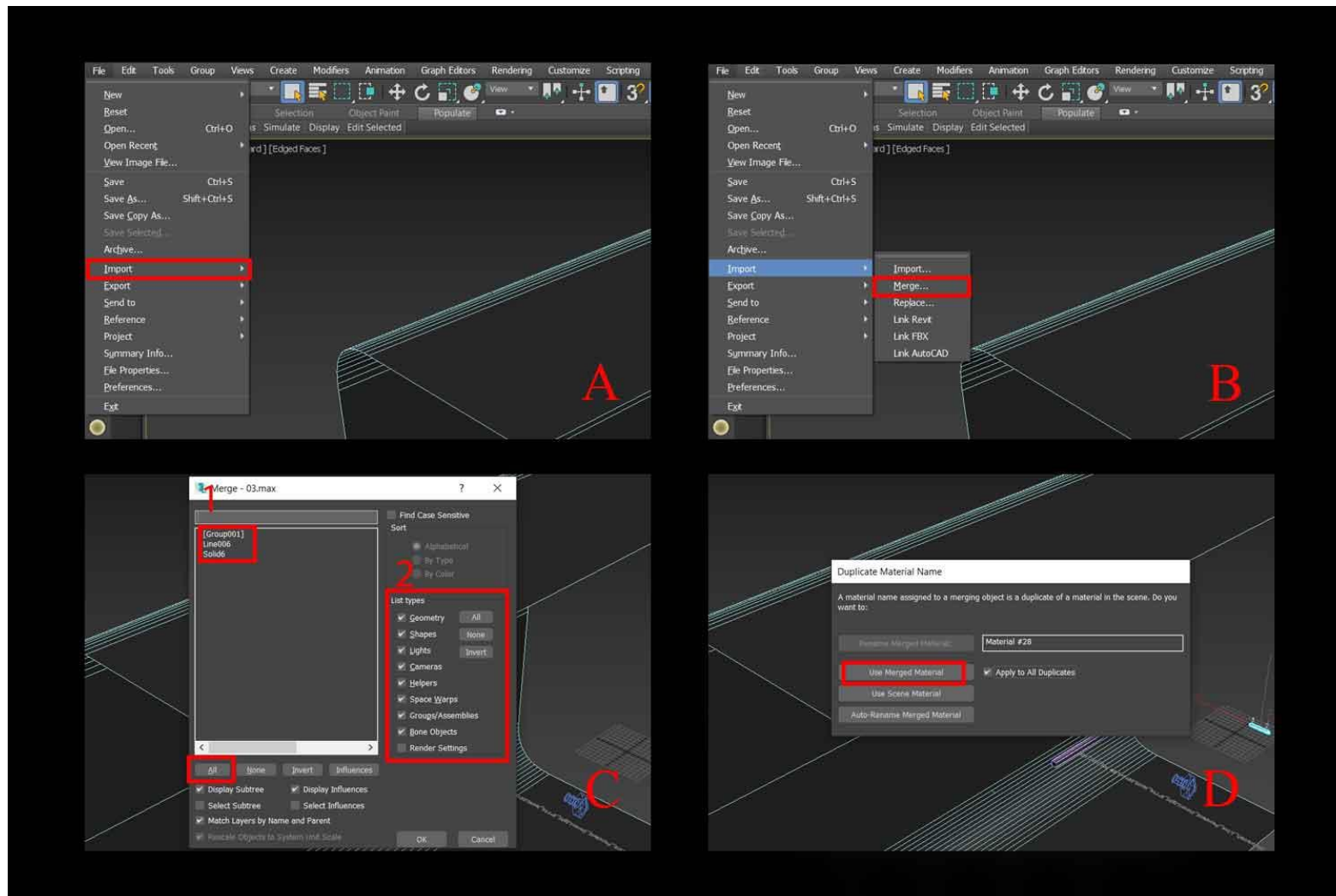
How to use files:

Software used	File	Version	Render engine (1)	Render engine (2)	Texture file	Material	IES file
3D Max 2022 and upper	.max	2022	Corona	V-Ray	Yes	Yes	Yes
Revit 2021 and upper	.rfa	2021	-	-	-	Yes	Yes
3D Max and other 3D software	.fbx	2022	-	-	No	Yes	Yes
3D Max and other 3D software	.obj	2022	-	-	No	Yes	Yes
Material library	.mat	2022	Corona 7 and upper	V-Ray 5 and upper	Yes	Yes	No

How to use max file:

First, select 'File' from the toolbar

Then select 'import' and then 'Merge', and after selecting the file from the downloaded folder, perform the merge operation.

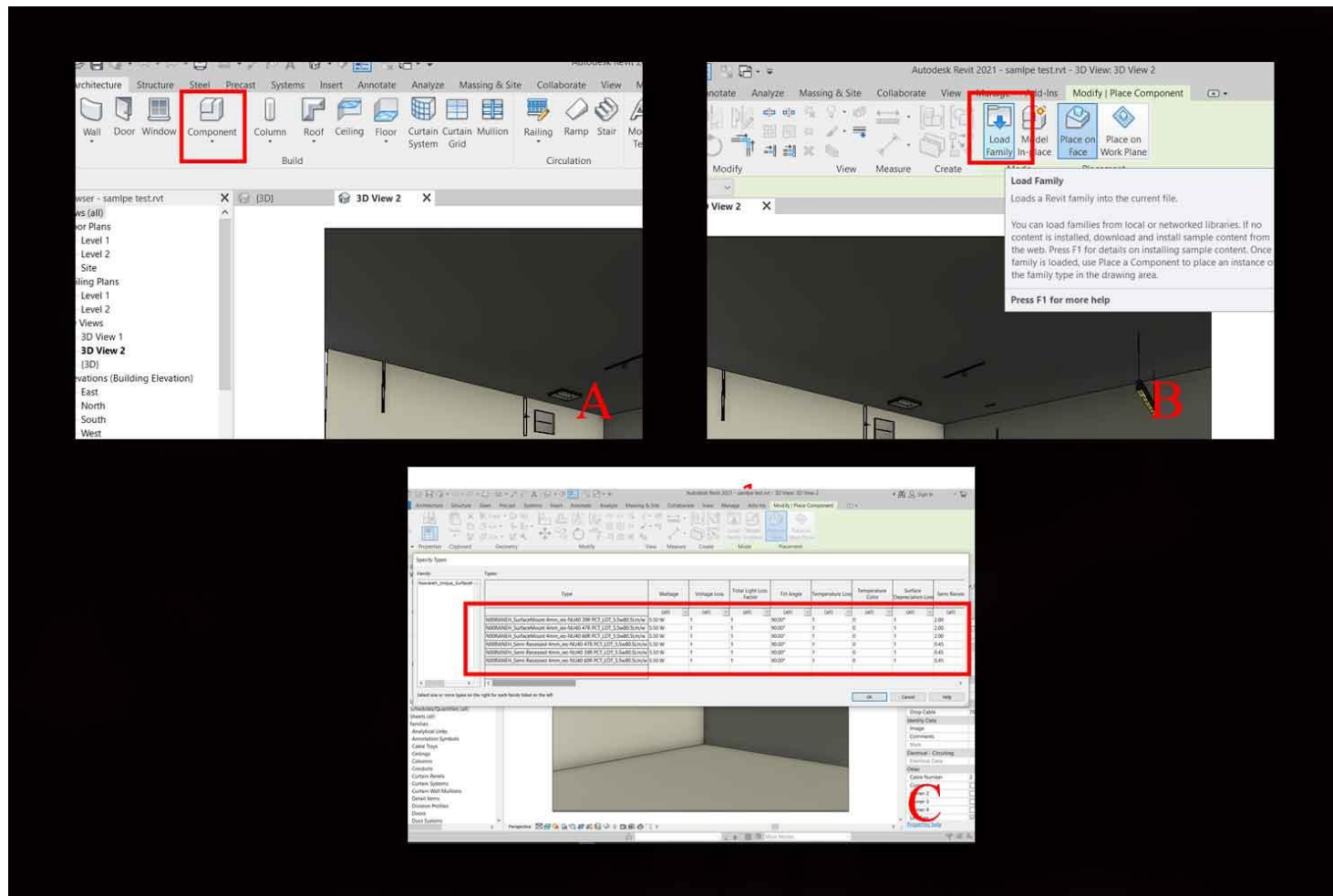


How to use the family Revit file:

The first method:

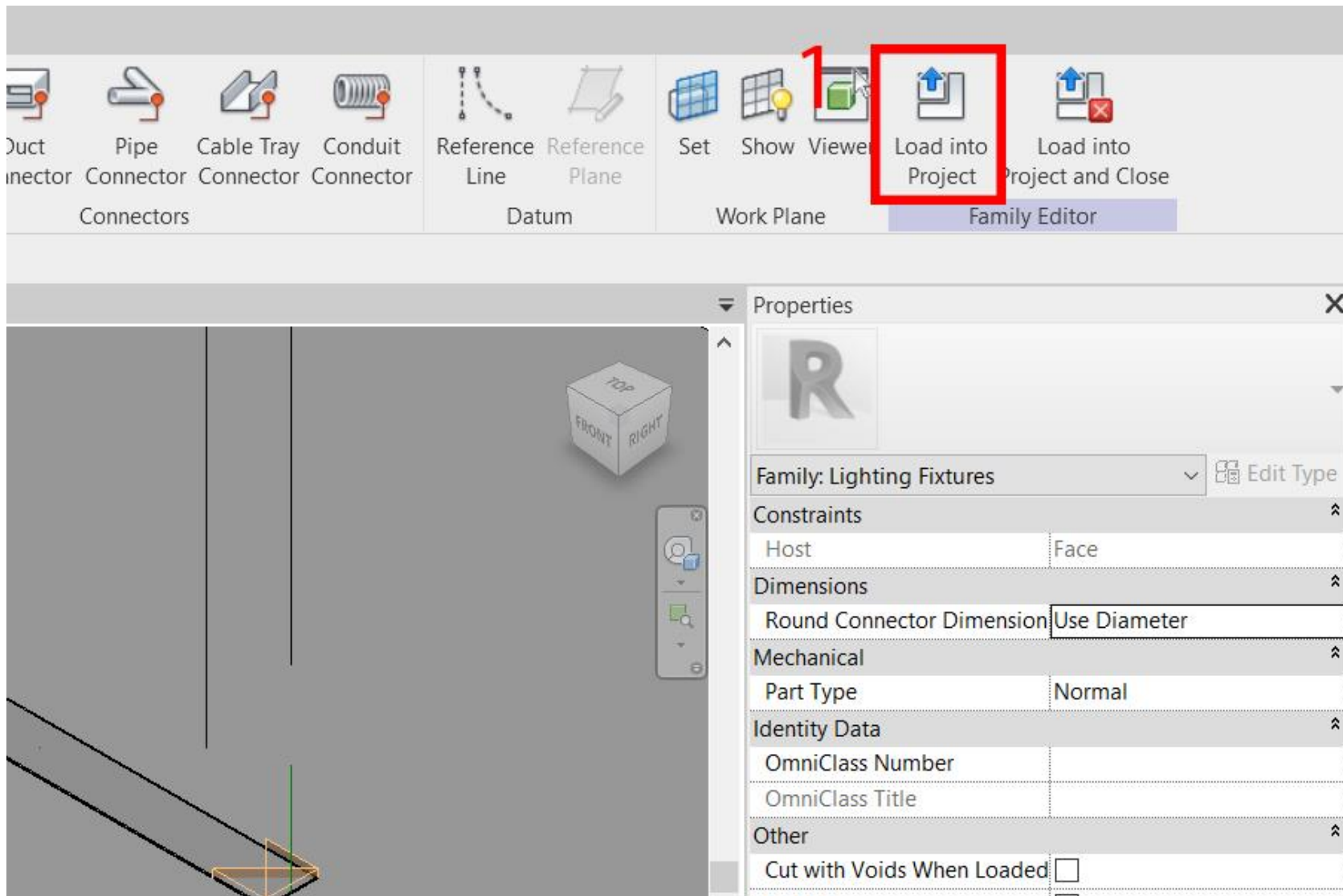
First, click the 'Component' in the project toolbar, then click on the 'Load Family' and call it from the saved family file location.

* Note: in families involved type, before selecting, you can choose the desired types and call them.



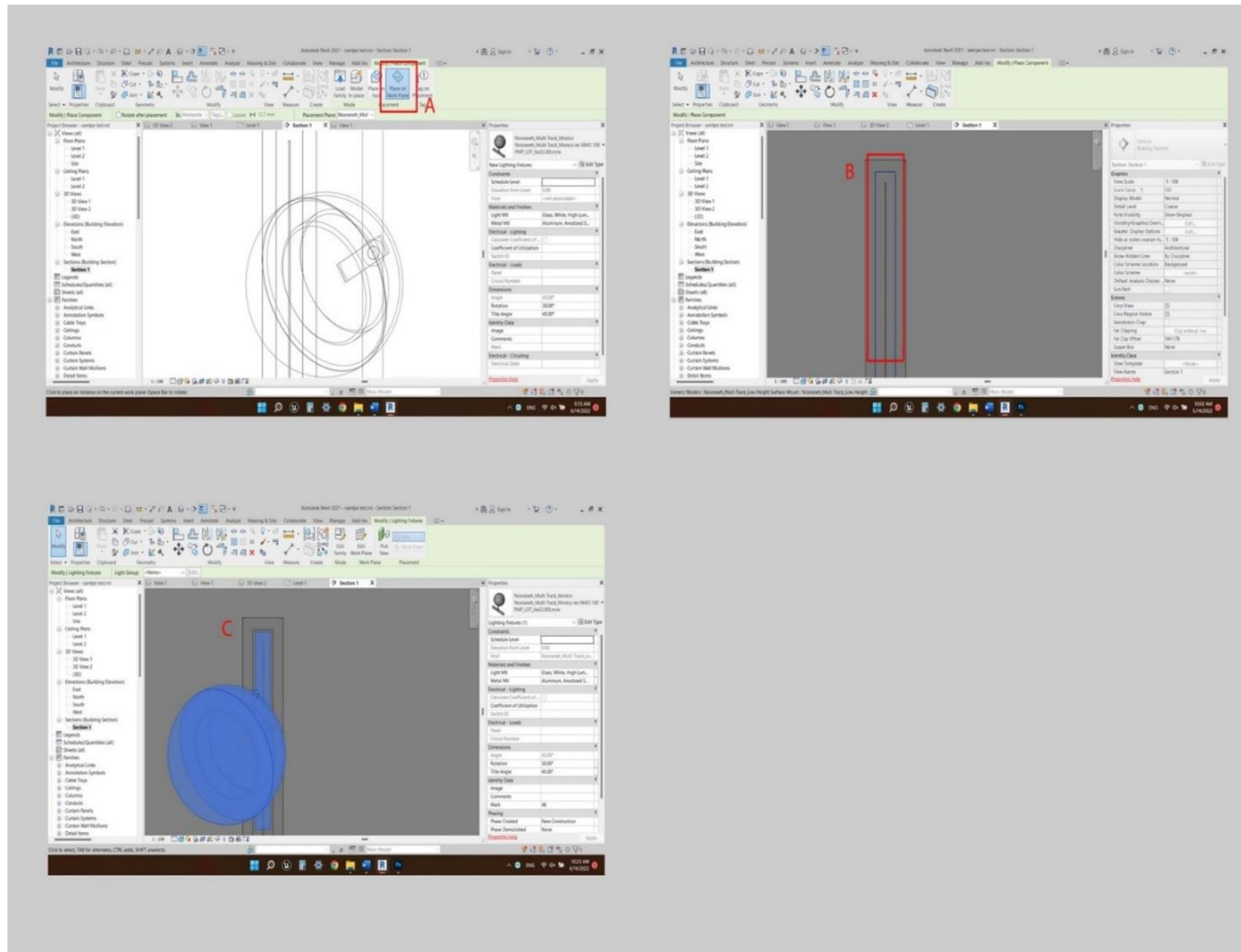
The second method:

Run the desired family file on your system and then click on 'Load into Project' and add family to the project file.



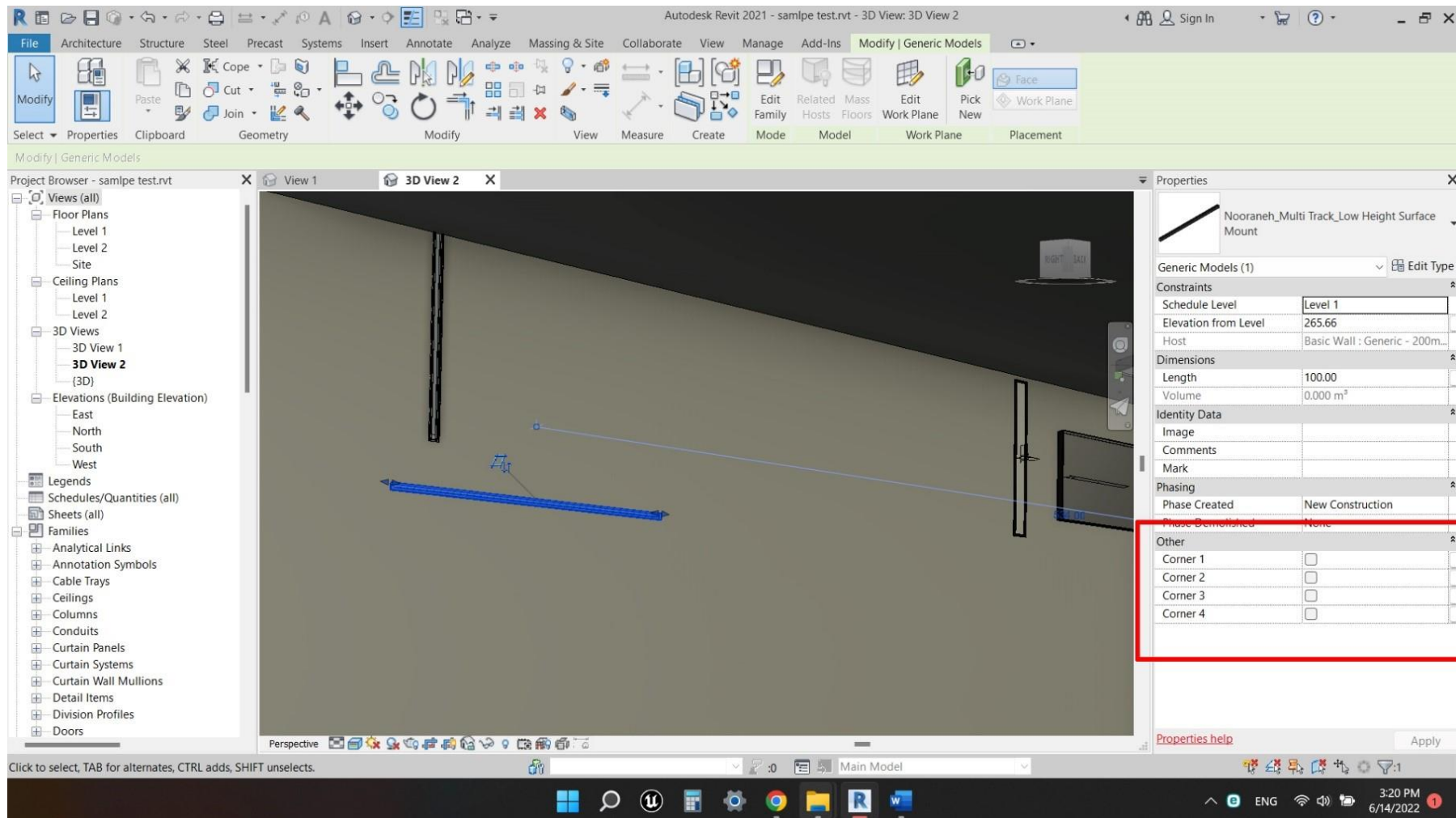
Tips for using Revit files:

To place the bim object of the source inside the rail, after loading them and placing the rail in the desired place, set the work plane of the source on the highest internal surface of the rail and then place the source and, if necessary, use the Align command to put it in the center.



To access the optical settings of some objects such as "unique track mounted", by placing the mouse pointer on the object and pressing the tab key, select the source and change it.

*Note: in some linear objects, such as rails or linear luminaires, if you need bevel cut (90 degrees), you can activate the bevel cut object by activating the Corner options in Properties, and Paste the bevel objects together with Arrow Keys.



Nooraneh lighting company is a manufacturer of innovative and architectural LED lighting products and custom luminaires with the highest technical standard and 5-year guarantee, including linear lighting, downlights, spotlights, modern lighting systems, and lighting solutions.

Contact:

Tel & Fax: +9821-88839700

Website: nooraneh.com

Instagram: [instagram.com/nooraneh_lighting](https://www.instagram.com/nooraneh_lighting)

LinkedIn: [www.linkedin.com/nooraneh](https://www.linkedin.com/company/nooraneh)

Email: info@nooraneh.com

Copyright Notice:

All of the information in this document is protected by Nooraneh lighting Co. Reproduction and distribution of the information is prohibited and will be prosecuted.

© 2021 Nooraneh

All rights reserved.